

PLAT NO. 24
SAILFISH POINT P.U.D.
 LYING IN SECTIONS 8, 9, & 16
 TOWNSHIP 38 SOUTH, RANGE 42 EAST
 MARTIN COUNTY, FLORIDA
 JUNE, 1990

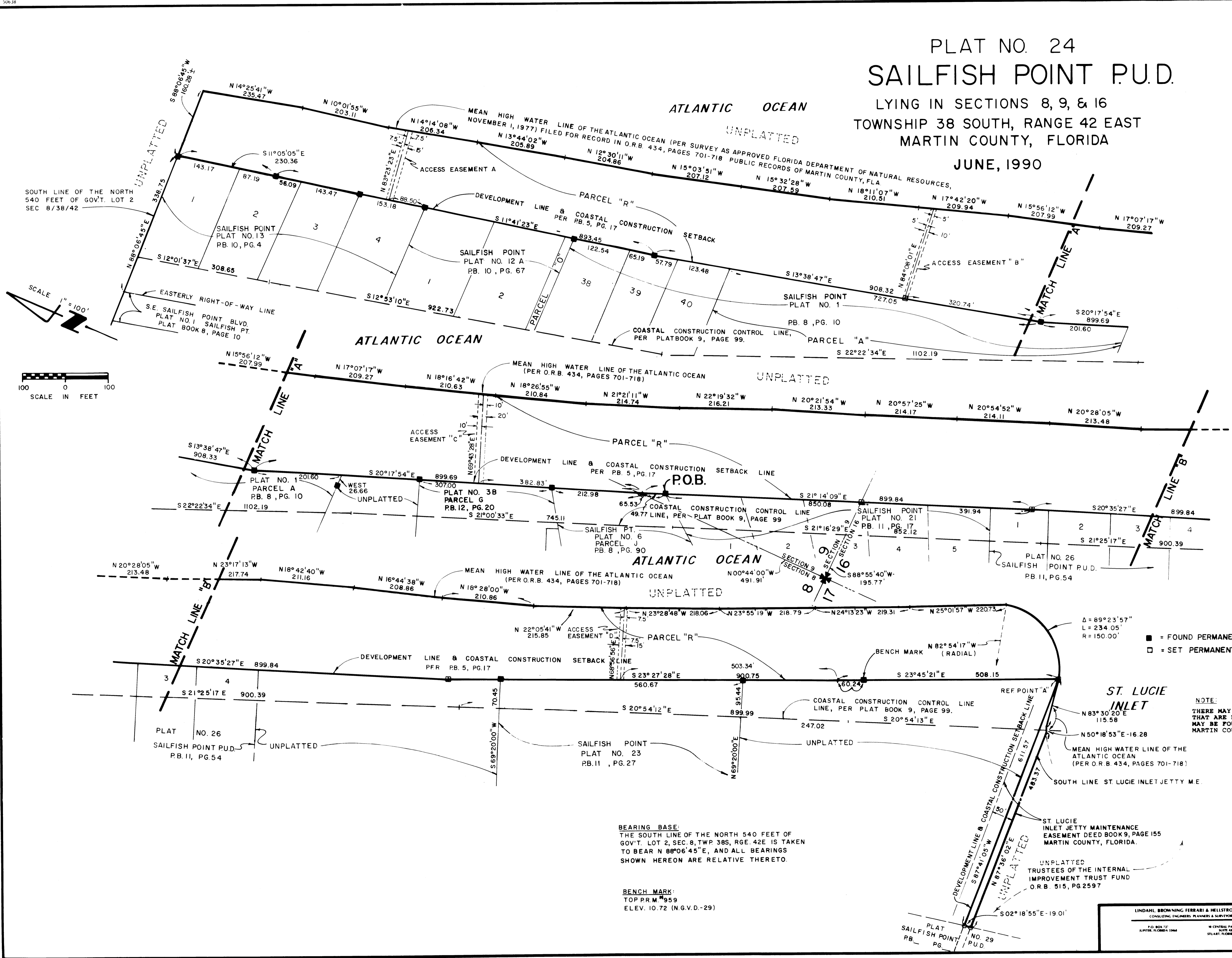
I, MARSHA STILLER, CLERK OF THE CIRCUIT COURT OF MARTIN COUNTY, FLORIDA, HEREBY CERTIFY THAT THIS PLAT WAS FILED FOR RECORD IN PLAT BOOK 12, PAGE 60, MARTIN COUNTY, FLORIDA, PUBLIC RECORDS, THIS _____ DAY OF _____, 19____.

MARSHA STILLER,
 CLERK CIRCUIT COURT
 MARTIN COUNTY, FLORIDA.

BY: _____
 DEPUTY CLERK

FILE NO. _____

(CIRCUIT COURT SEAL)



BEARING BASE:
 THE SOUTH LINE OF THE NORTH 540 FEET OF GOV'T. LOT 2, SEC. 8, TWP. 38S, RGE. 42E IS TAKEN TO BEAR N 88°06'45"E, AND ALL BEARINGS SHOWN HEREON ARE RELATIVE THERETO.

BENCH MARK:
 TOP P.R.M. #959
 ELEV. 10.72 (N.G.V.D.-29)

Δ = 89°23'57"
 L = 234.05'
 R = 150.00'

■ = FOUND PERMANENT REFERENCE MONUMENT (PRM)
 □ = SET PERMANENT REFERENCE MONUMENT (PRM)

NOTE:
 THERE MAY BE ADDITIONAL RESTRICTIONS THAT ARE NOT RECORDED ON THIS PLAT THAT MAY BE FOUND IN THE PUBLIC RECORDS OF MARTIN COUNTY, FLORIDA.

ST. LUCIE INLET JETTY MAINTENANCE EASEMENT DEED BOOK 9, PAGE 155 MARTIN COUNTY, FLORIDA.

UNPLATTED TRUSTEES OF THE INTERNAL IMPROVEMENT TRUST FUND O.R.B. 515, PG.2597

LINDAHL BROWNING FERRELL & WELLS, INC.
 CONSULTING ENGINEERS, PLANNERS & SURVEYORS

110 N.W. 17th
 MIAMI, FLORIDA 33136

100 CENTRAL PARKWAY
 SUITE 200
 ST. LUCIE, FLORIDA 33404